

# INTERIOR DESIGN<sup>®</sup>

NOVEMBER  
2013



*branching out*

firms: dhd architecture & design; rac design build  
site: los angeles

## where the stars come out

walk through

FRAMESTORE

Custom doors and windows, framed in steel, are new to the 1938 warehouse that's now Framestore.

# walk through



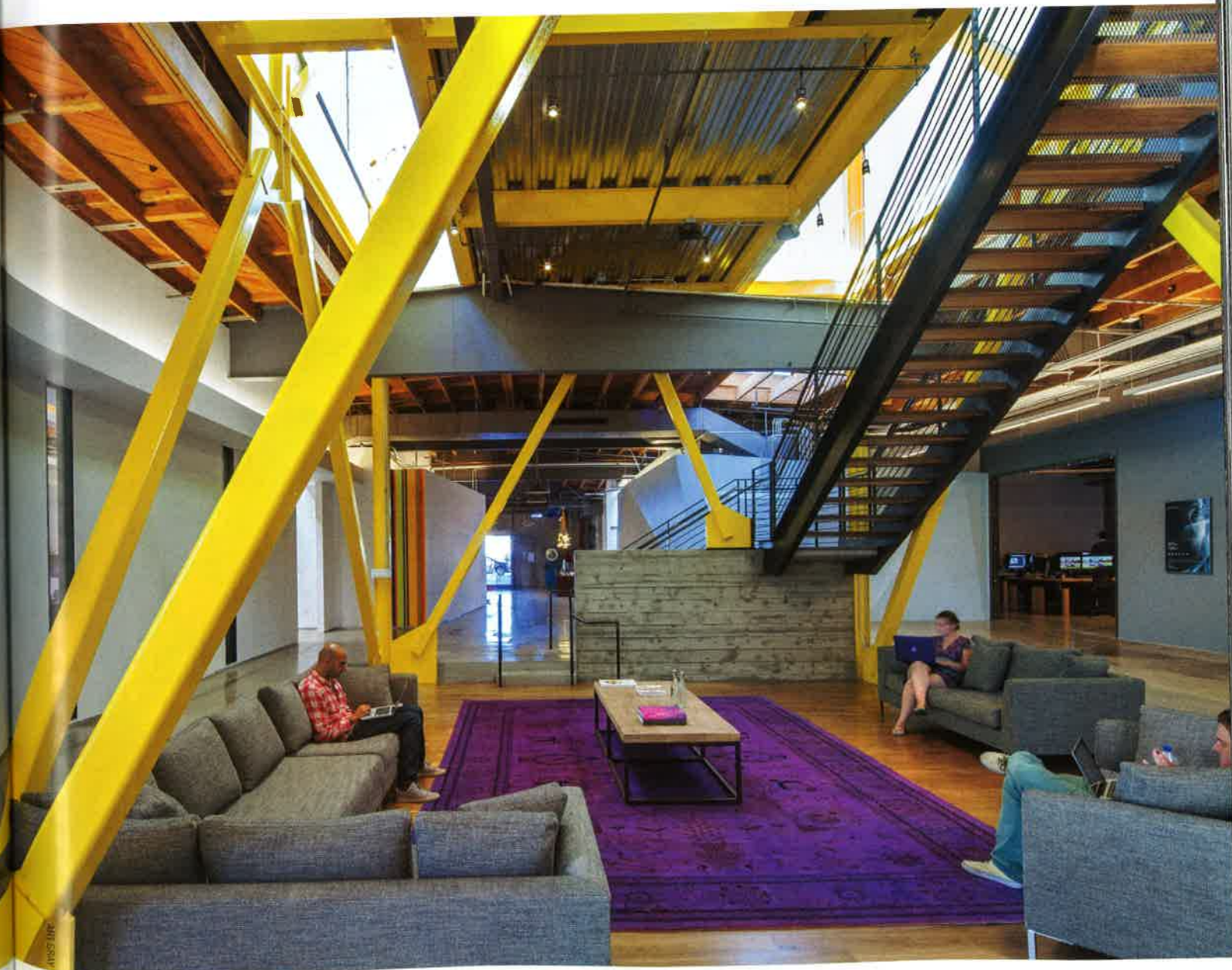
**Pictures, the moving kind,** are what Framestore is all about. From headquarters in London, the studio has provided animation, visual effects, and postproduction for such blockbusters as the Harry Potter franchise. David Howell designed the New York satellite a decade ago. Now, in the interiors version of a sequel, his firm, DHD Architecture & Design, has collaborated on a Los Angeles location.

Before Framestore entered the picture, real-estate developer Industry Partners had already hired RAC Design Build for tenant-improvement work on the building, a 1938 tilt-up warehouse with a tower addition. "We started with doors for the main entry, glazing and cladding for the tower, and the conference areas," RAC's Rick A. Cortez says. When Framestore signed on for the 12,000 square feet and brought Howell along, Cortez continued as a partner.

"We carried over elements from the other Framestores," Howell begins. Those include a faceted enclosure for the restrooms, subway straps sprinkled about, bold stripes, and sunny yellow accents. New to the color palette, a teal feature wall references '70's uniforms from Air New Zealand. (He's a Kiwi.)

"The space allowed for a diversity of zones," Howell continues. "To cater to the big-name directors, we broke it up into smaller rooms with a nonlinear plan." ➤

***Clockwise from top left:**  
Tower access is via stairs  
in blackened steel, walnut,  
and steel mesh. Polished  
concrete flooring flows  
through reception. Walnut  
floorboards define the staff  
lounge. A '60's airplane seat  
occupies a corner of the client  
lounge. Painted drywall  
encloses restrooms.*



So when, say, *Avatar*'s James Cameron comes by, he could bypass reception and go right to the client lounge, where—from the comfort of a vintage airplane seat—he might just be impressed and amused enough to seal the deal.

Edit bays and production offices surround the kitchen and the sunken lounge for the 50 employees. It's in looking up from the lounge that you fully appreciate the drama of the two-story tower directly overhead. That's because Howell and Cortez eschewed solid flooring in favor of catwalk-style steel.

The tower houses a break-out area on the lower level and a conference room on the upper level. Above that, the roof terrace offers a perfect view stretching all the way to the Hollywood sign. No computer-generated imagery required. —*Edie Cohen*

## walk through

*Clockwise from left: The tower was added in 1989. Its cladding is sheet steel with a resin-based finish. Fromestore plans to expand into the building next door. Walnut and Carrara marble meet custom pendant fixtures by Bec Brittain in the kitchen.*



**FROM FRONT** FAST SIGNS: CUSTOM SIGNAGE (EXTERIOR); ARTEMIDE: CHANDELIER (RECEPTION); MATTER MATTERS: PENDANT FIXTURE (DWELL FLOOR FIVE); CHAIRS (RECEPTION); CUSTOM SEATING (STAFF LOUNGE); SOFA (CLIENT LOUNGE); CHAIRS, TABLE (KITCHEN); THROUGH RUG WAREHOUSE: RUG (STAFF LOUNGE); HD BUTTERCUP: TABLE (STAFF LOUNGE); STOOLS (KITCHEN); THROUGH EBAY: AIRPLANE SEAT (CLIENT LOUNGE); THROUGH RESTORATION HARDWARE: TABLE; BEC BRITAIN: CUSTOM PENDANT FIXTURES (CLIENT LOUNGE, KITCHEN); STONE SOURCE: FLOOR TILE (CLIENT LOUNGE); COUNTER MATERIAL (KITCHEN); KITCHENAID: REFRIGERATOR (KITCHEN); GENERAL ELECTRIC: MICROWAVE; THROUGHOUT CALIFORNIA PAINTS: PAINT; KAPLAN GEHRING MCCARROLL ARCHITECTURAL LIGHTING: LIGHTING CONSULTANT; JOHN LABIB & ASSOCIATES: STRUCTURAL ENGINEER; CURESH ENGINEERING: MEP; EUROPEAN ELEGANCE WOODWORK: WOODWORK; CITY CONSTRUCTORS: GENERAL CONTRACTOR